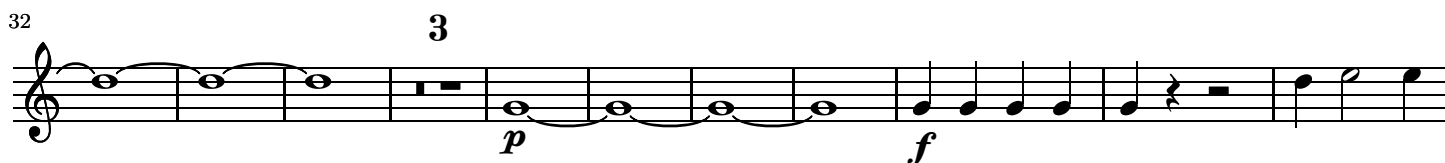


# Symphony nr. 18 in F major K. 130

WOLFGANG AMADEUS MOZART (1756-1791)

ALLEGRO.



98

3

*p*

*f*

112

6

*f*

126

ANDANTINO GRAZIOSO.

Corno I  
in F.

10

2

3

*f*

26

*p*

41

*f*

55

10

2

3

*f*

82

93

104

6

*p* *f*

# MENUETTO.

4

Corno I  
in F.

*f*

## Trio.

12

11

9

## Men.D.C.

# ALLEGRO MOLTO.

Corno I  
in F.

*f*

10

19

2

2

29

39

18

*f*

66

8

*f*

83

2 4

*f* *f* *f*

101

111

122

4

133

2 2

*f*

144

155

18

*f*

182

8

*f*