

String Quartet KV. 421 (nr. 15)

for 2 violins, viola and cello

W. A. MOZART (1756-1791)
KV. 421

Allegro.

Violino I.

sotto voce

f

6

p

f

p

11

f

p

fp

f

p

17

cresc.

p

f

23

p

27

p

31

f

p

sf

p

35

40 1. || 2.

43

49

56

62

67

71

77

82 *fp* *f* *p* *sf* *p*

87 *sf* *p* *p*

91 *f* *p*

95

99 *p* *f*

102 *p* *sf* *p* *cresc.* *f*

107 *p*

113 1. 2.

cresc. *cresc.*

116



KV. 421

Andante.



5



9



13



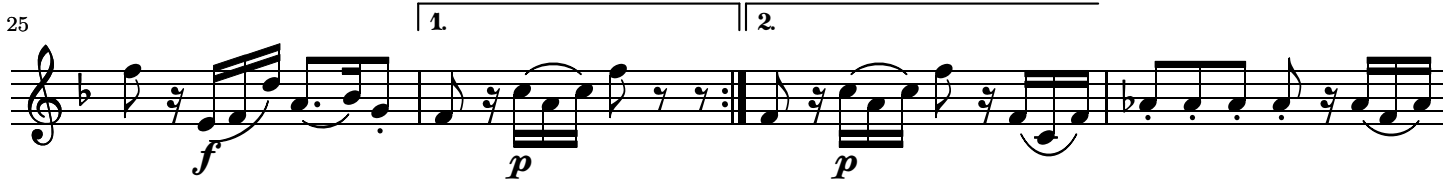
17



21



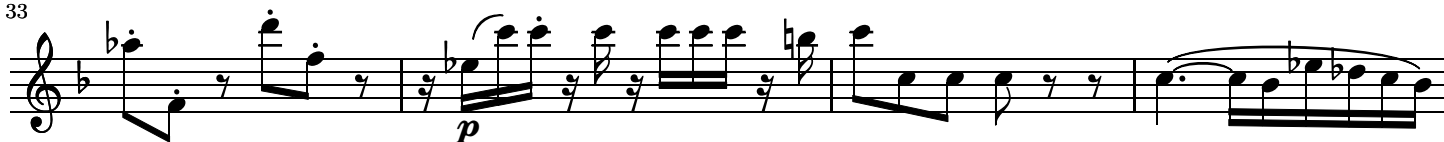
25



29



33



37



40



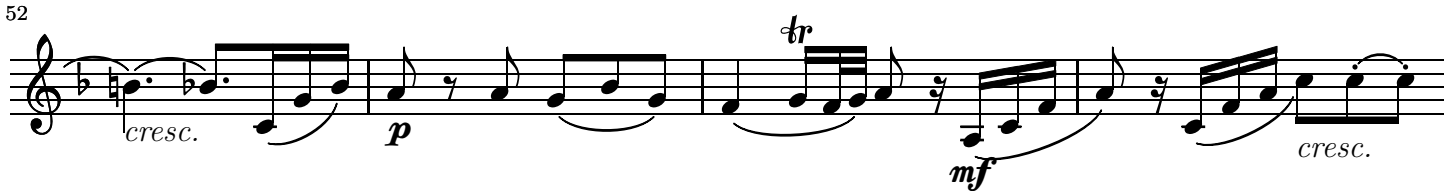
43



47



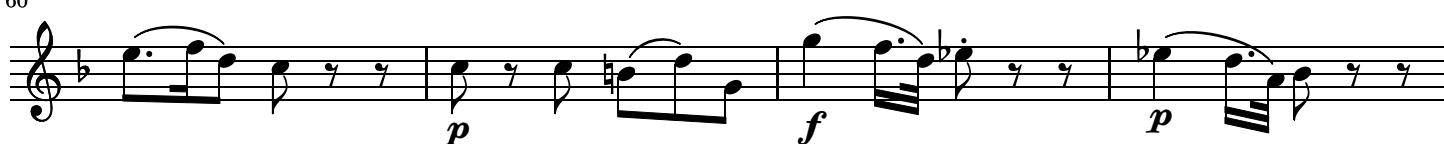
52



56



60



64

pp *mf* *p*

68

tr *mf* *p* *tr*

72

cresc. *f* *p* *mf*

76

p *f* *cresc.*

80

f *p* *cresc.* *f* *p*

84

cresc. *p*

MENUETTO. (Allegretto.)

KV. 421

Violino I. *f*

6

f

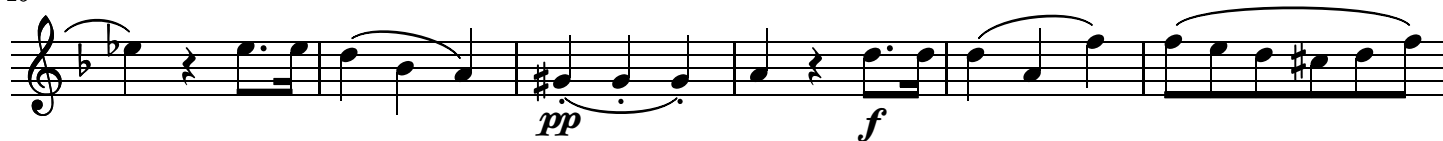
12

p

19



26



32



38



43



48



54



59



Menuetto D.C.
KV. 421

Allegro ma non troppo.

Violino I.



46

51

63

69

75

87

93

98

103

108

Più Allegro.

118

124

131

137